

HIV in Ireland



Christine Kelly, HIV Molecular Research Group, UCD, Dublin

Data source: www.hpsc.ie

With special thanks to:

- Professor Paddy Mallon (HIV Molecular Research Group, UCD, Dublin)
- Dr. Fiona Lyons (GUIDe, St. James Hospital, Dublin)

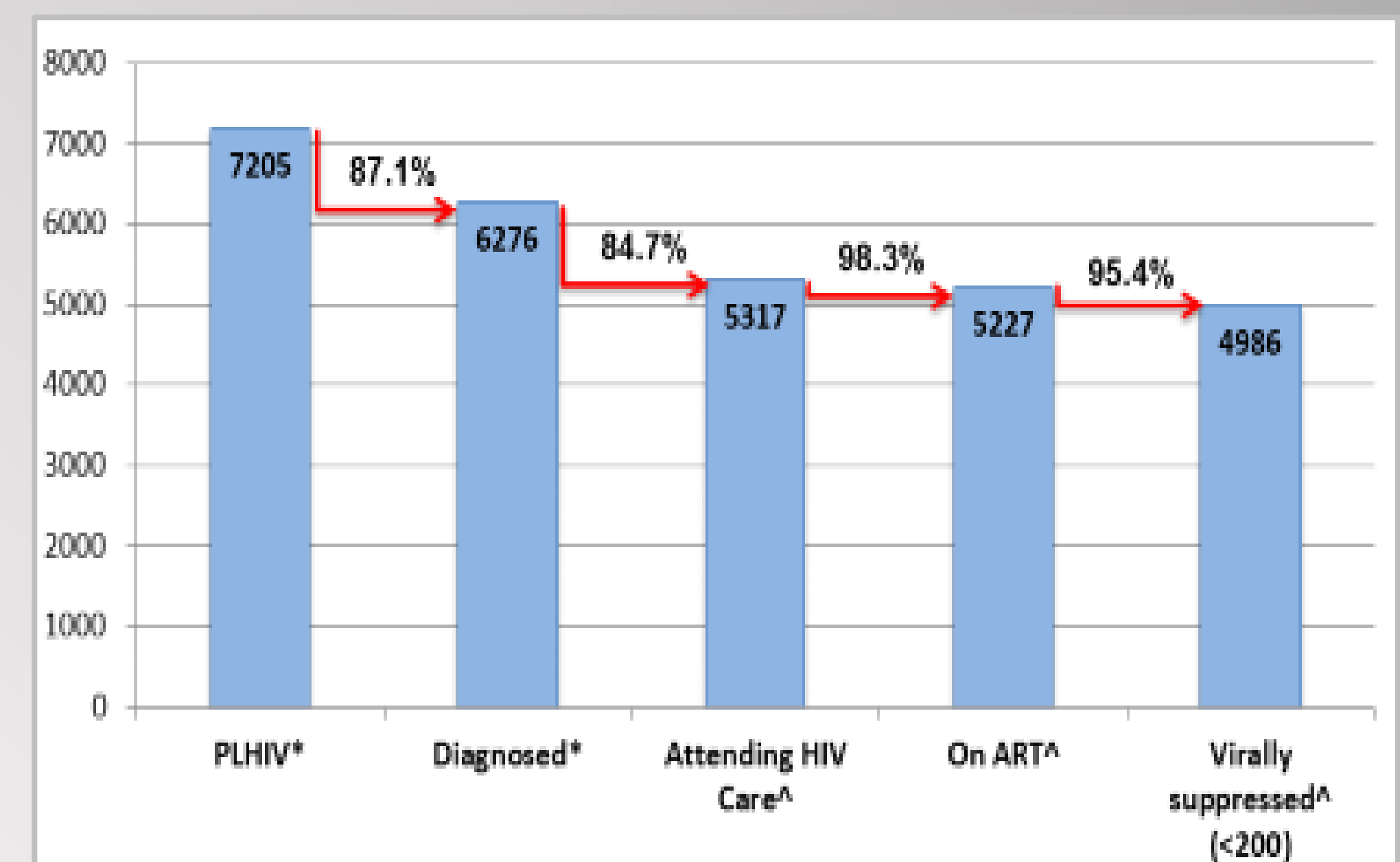
Diagnosis

- 506 new HIV notifications in 2016; 504 in 2017
- Incidence stable at 10 in 100,000 per year since 2015
- 34% previous diagnosis abroad; up from 21% in 2012
- 51% from MSM cohort; 42% diagnosed abroad
- New diagnoses in MSM decreased 14% from 2015 to 2016
- 64% of heterosexual patients were born in SSA
- 44% of new diagnoses presented with CD4<350



Care Continuum

- In 2018, all HIV services were audited across Ireland.
- For stages 1 and 2 below, modelling was performed based on UNAIDS estimates.
- This is limited by a large migrant population.
 - Only 87% diagnosed
 - Only 83% on ART



Diagnosis

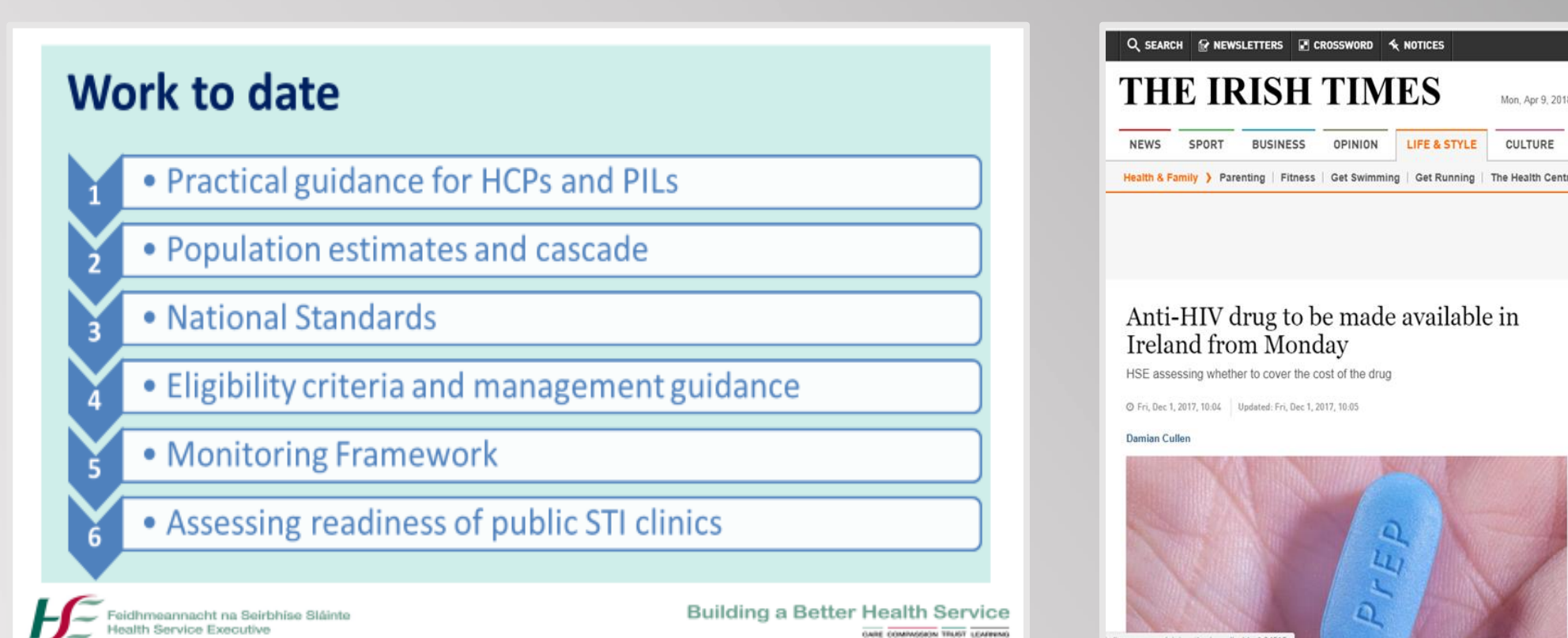
Care continuum

Prevention

Community Engagement

Prevention

- Community testing via KnowNow study: 2% of 965 new positive tests, 24% never tested before.
- PreP care platform currently being established.
 - 11.5% (9947) MSM estimated eligible for PreP.
 - Presumed 58% uptake.
 - Between 865 and 2596 would avail.



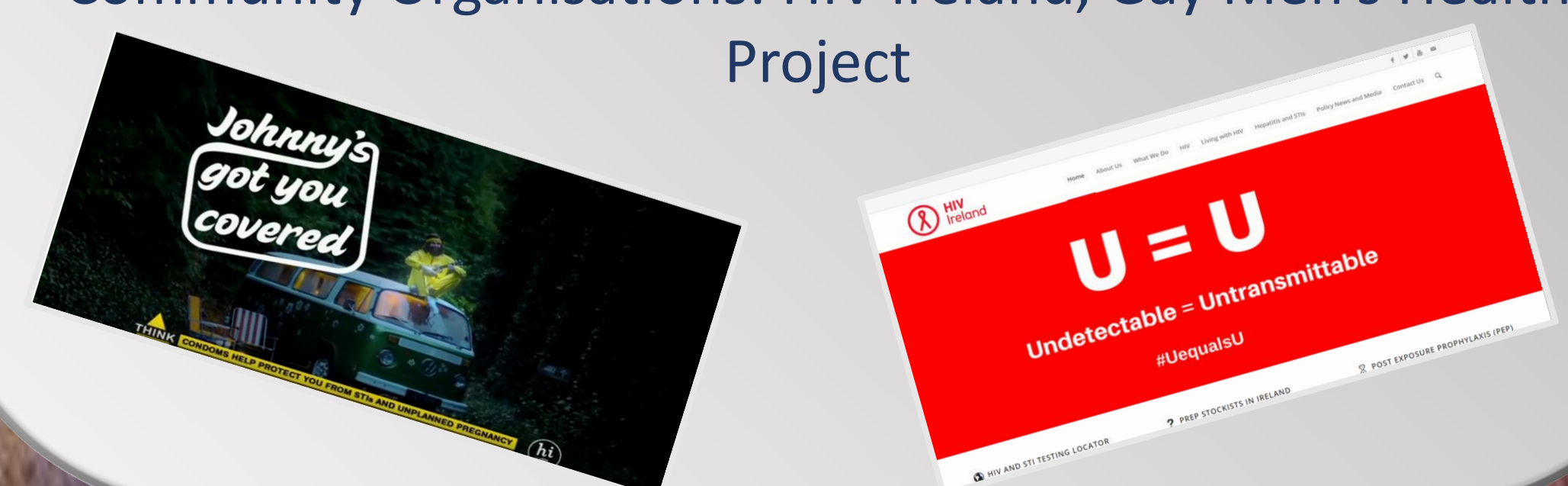
Future work

- Post Exposure Prophylaxis: identifying those eligible for PreP
- STI clinics: HIV testing and integrated care
- Treatment as prevention & promotion of U=U
- Harm reduction for PWIDs

Community Engagement



Websites: Man2Man.ie, Sexual wellbeing.ie
Campaigns: 'Luv Bugs' and 'Johnny's got you covered'
Community outreach: MSM peer outreach workers, KnowNow study
Community Organisations: HIV Ireland, Gay Men's Health Project



Future Work

- PreP Reimbursement and Roll out
- Community Testing for MSM and migrant groups
- Improved linkage and retention to care for vulnerable groups
- Audit to inform more accurate modelling in specific population groups