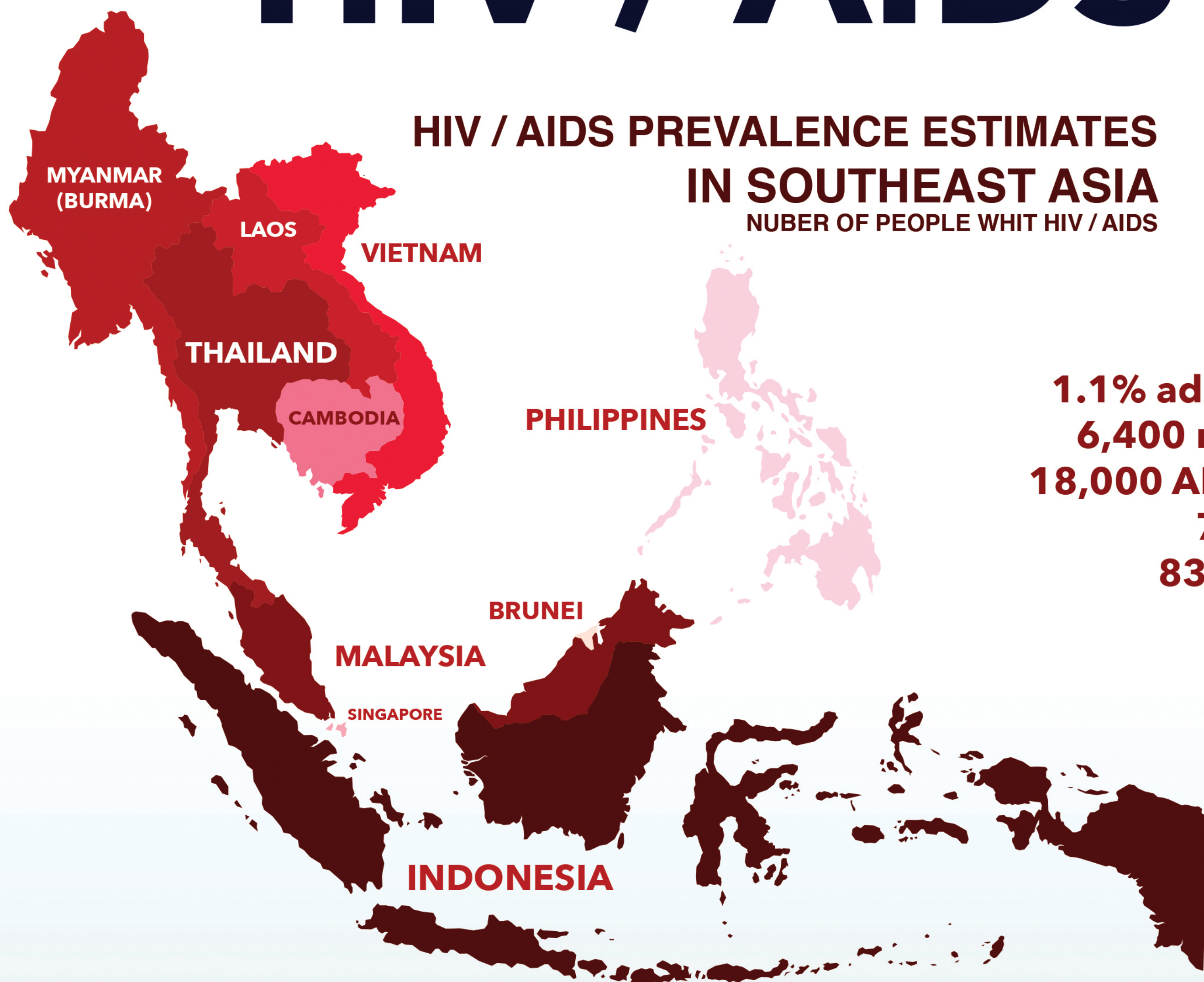


# HIV / AIDS IN THAILAND

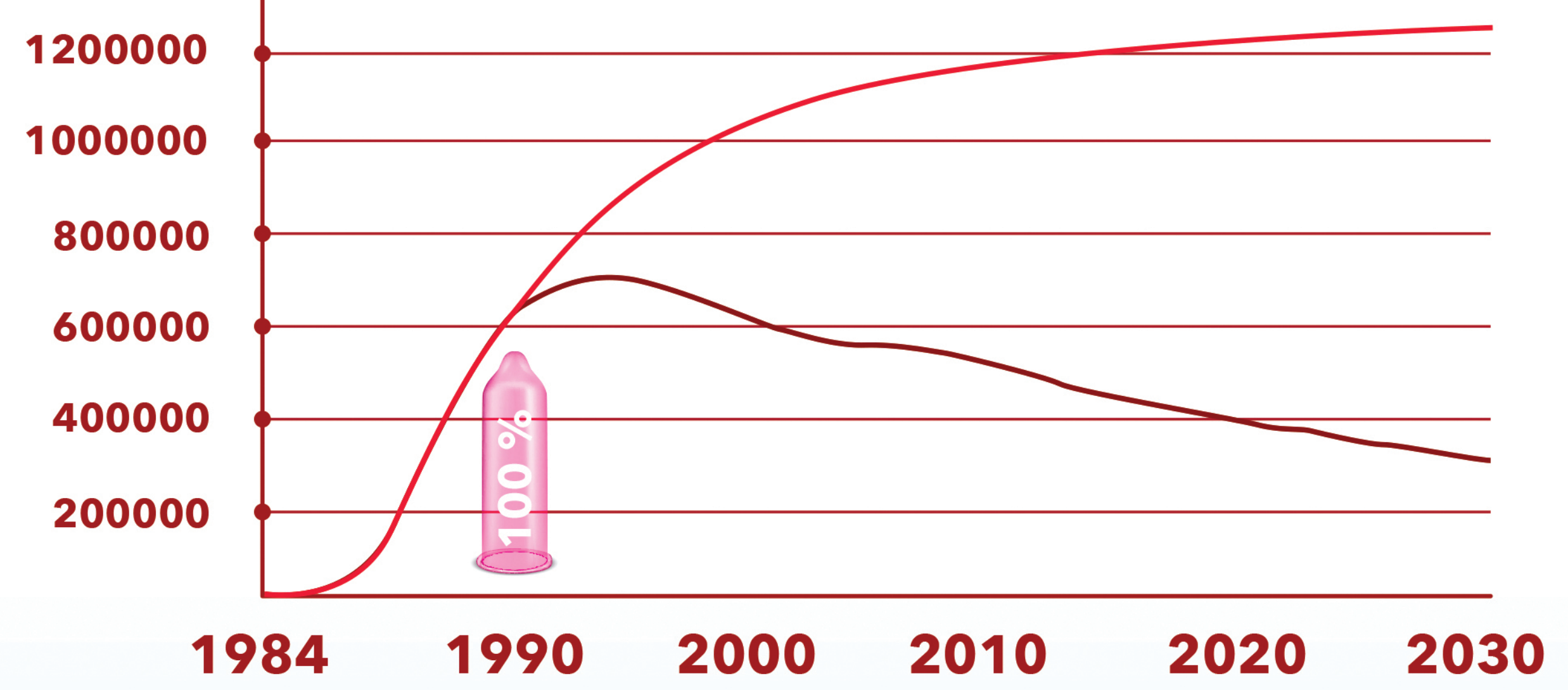


## HIV / AIDS PREVALENCE ESTIMATES IN SOUTHEAST ASIA

NUMBER OF PEOPLE WITH HIV / AIDS

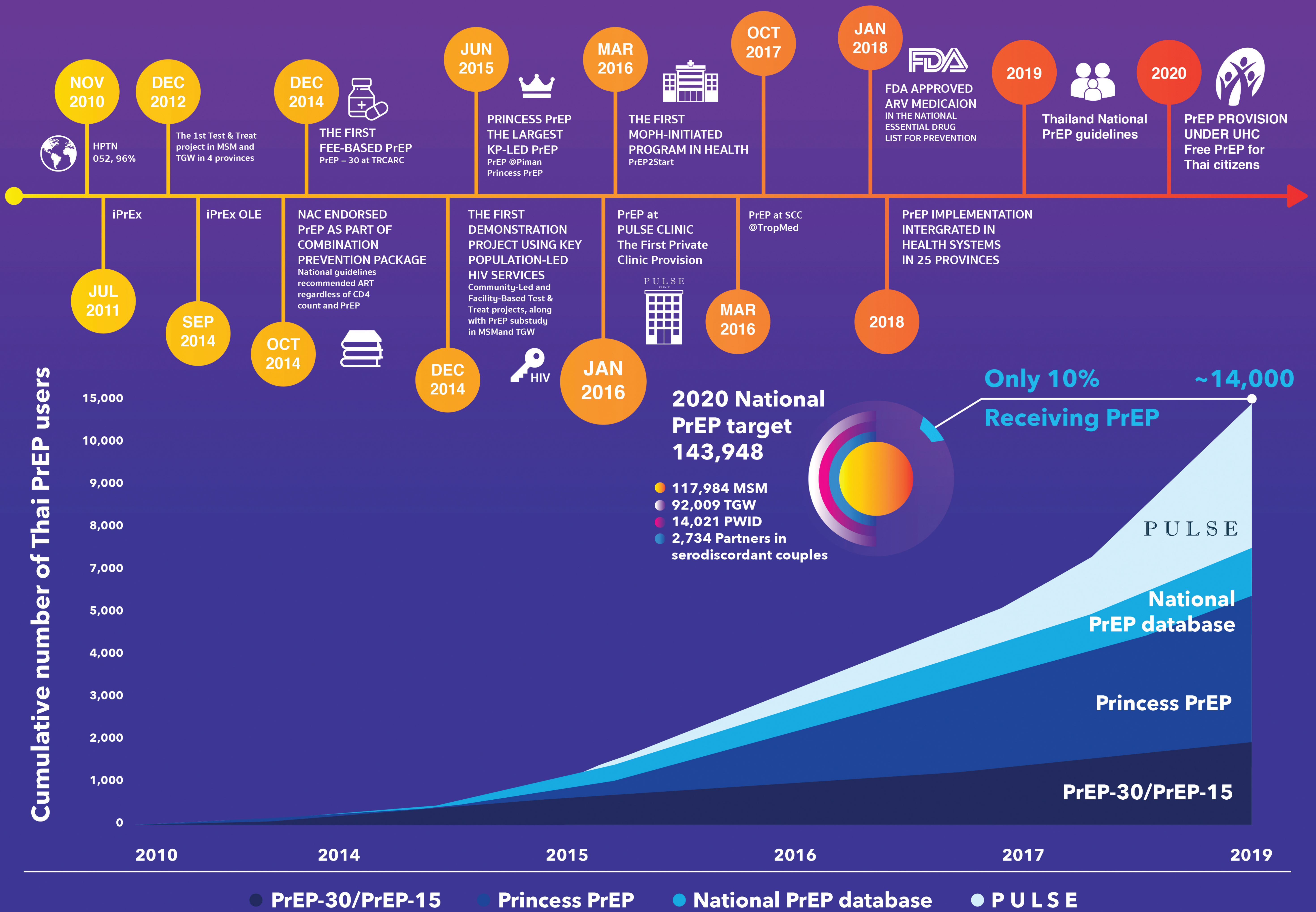


**Thailand (2018)**  
**480,000 PLHIV**  
**1.1% adult HIV prevalence**  
**6,400 new HIV infections**  
**18,000 AIDS-related deaths**  
**75% adults on ART**  
**83% children on ART**

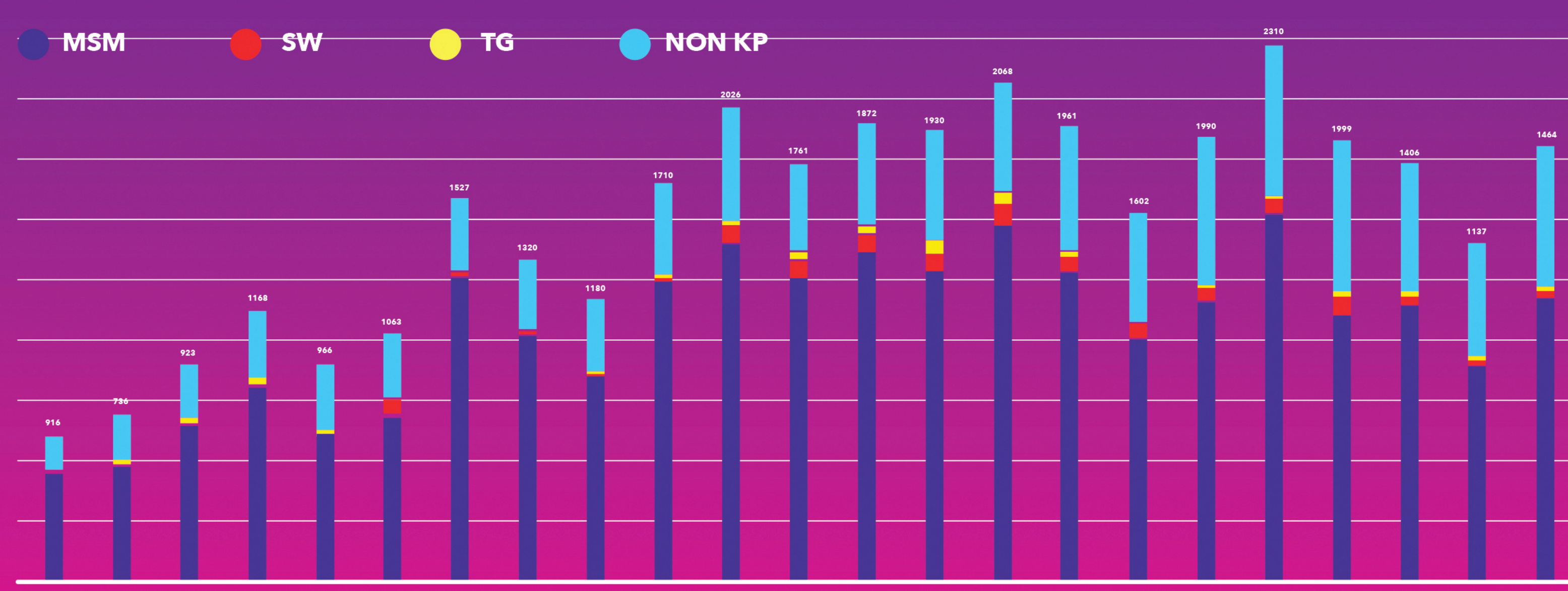


## PrEP IN THAILAND

## THAILAND'S PRE-EXPOSURE PROPHYLAXIS (PrEP) IMPLEMENTATION: MOVING FROM TRIALS TO POLICY AND PRACTICE



### PULSE Client



### PrEP Delivery 2018-2019

